

Map tiles

Patrick Brown

May 21, 2015

1	osm	2
2	osm-no-labels	2
3	osm-de	3
4	osm-transport	3
5	bw-mapnik	4
6	mapquest	4
7	mapquest-sat	5
8	mapquest-labels	5
9	landscape	6
10	opentopomap	6
11	maptoolkit	6
12	waze	7
13	humanitarian	7
14	cartodb	7
15	cartodb-dark	8
16	historical	8
17	stamen-toner	9
18	stamen-watercolor	9

The following are some examples of maps produced with
`mymap=openmap(x, path="something")`

1 `plot(openmap(x,path="osm"))`

©OpenStreetMap contributors. Data by OpenStreetMap available under the Open Database License, cartography is licensed as CC BY-SA.



2 `plot(openmap(x,path="osm-no-labels"))`

©OpenStreetMap contributors. Data by OpenStreetMap available under the Open Database License, cartography is licensed as CC BY-SA.



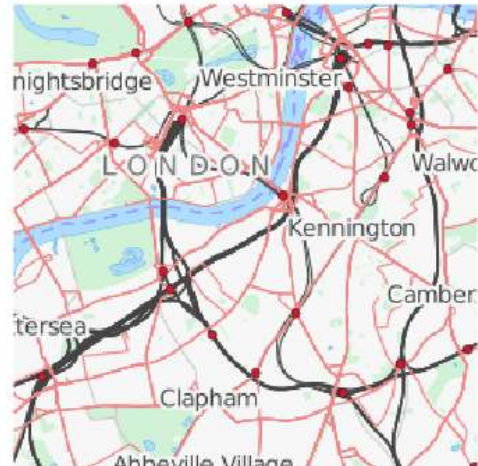
```
3 plot(openmap(x,path="osm-de"))
```

©OpenStreetMap contributors. Data by OpenStreetMap available under the Open Database License, cartography is licensed as CC BY-SA.



```
4 plot(openmap(x,path="osm-transport"))
```

©OpenStreetMap contributors. Data by OpenStreetMap available under the Open Database License, cartography is licensed as CC BY-SA.



```
5 plot(openmap(x,path="bw-mapnik"))
```

©OpenStreetMap contributors. Data by OpenStreetMap available under the Open Database License, cartography is licensed as CC BY-SA.



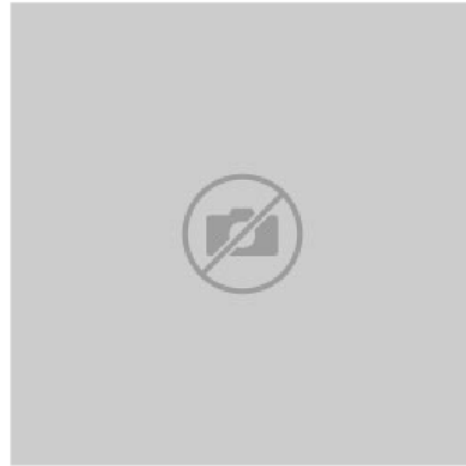
```
6 plotRGB(openmap(x,path="mapquest"))
```

Tiles courtesy of MapQuest. Data by OpenStreetMap available under the Open Database License



7 `plotRGB(openmap(x,path="mapquest-sat"))`

Tiles courtesy of MapQuest, portions courtesy NASA/JPL-Caltech and U.S. Depart. of Agriculture, Farm Service Agency.



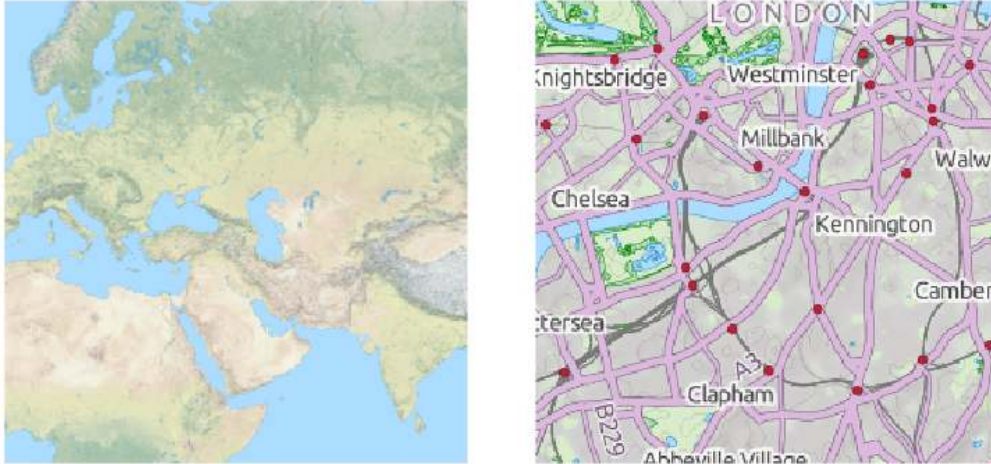
8 `plotRGB(openmap(x,path="mapquest-labels"))`

Tiles courtesy of MapQuest. Data by OpenStreetMap available under the Open Database License



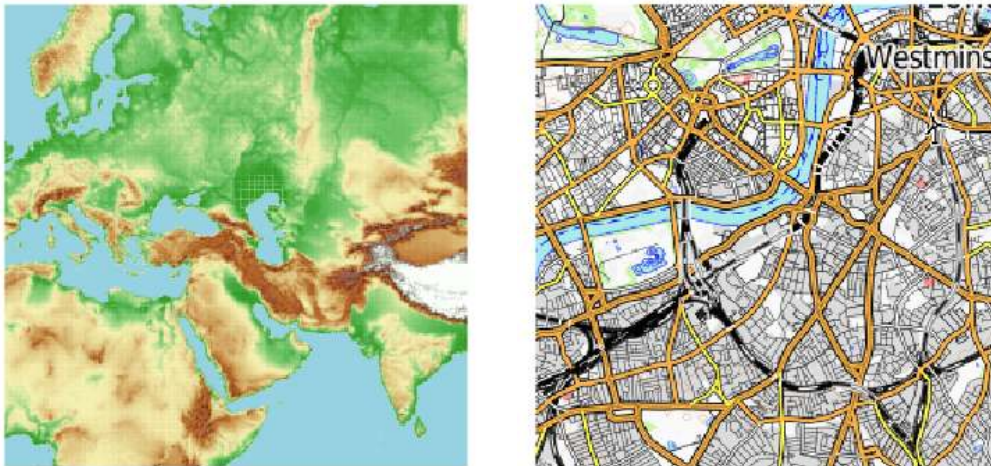
9 `plot(openmap(x,path="landscape"))`

©OpenStreetMap contributors. Data by OpenStreetMap available under the Open Database License, cartography is licensed as CC BY-SA.



10 `plot(openmap(x,path="opentopomap"))`

©OpenStreetMap contributors. Data by OpenStreetMap available under the Open Database License, cartography is licensed as CC BY-SA.



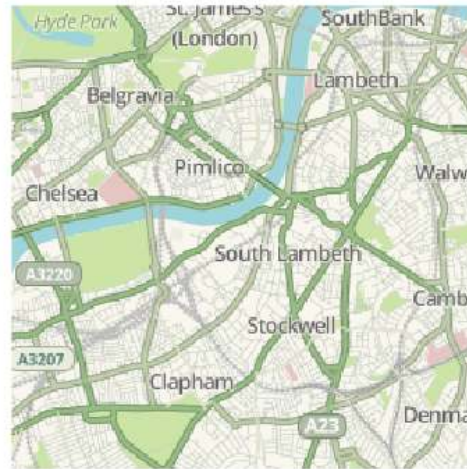
11 `plot(openmap(x,path="maptoolkit"))`

©Toursprung GmbH Data by OpenStreetMap available under the Open Database License




```
12 plotRGB(openmap(x,path="waze"))
```

©Waze mobile



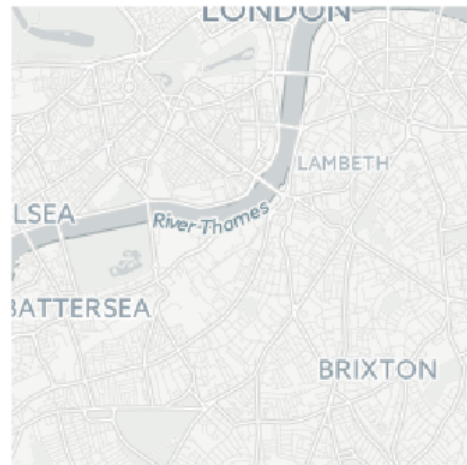
```
13 plot(openmap(x,path="humanitarian"))
```

©OpenStreetMap contributors. Data by OpenStreetMap available under the Open Database License, cartography by Humanitarian OSM team is licensed as CC BY-SA.



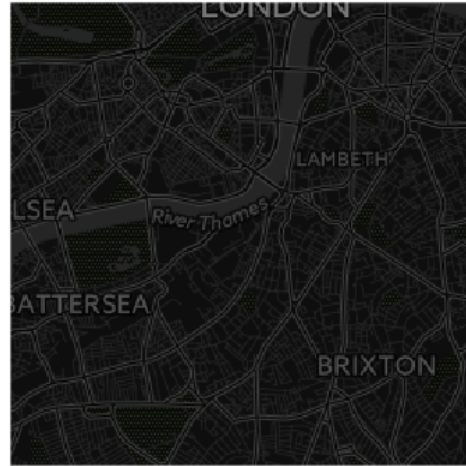
```
14 plot(openmap(x,path="cartodb"))
```

Map tiles by CartoDB under CC BY 3.0. Data by OpenStreetMap available under the Open Database License



15 `plot(openmap(x,path="cartodb-dark"))`

Map tiles by CartoDB under CC BY 3.0. Data by OpenStreetMap available under the Open Database License



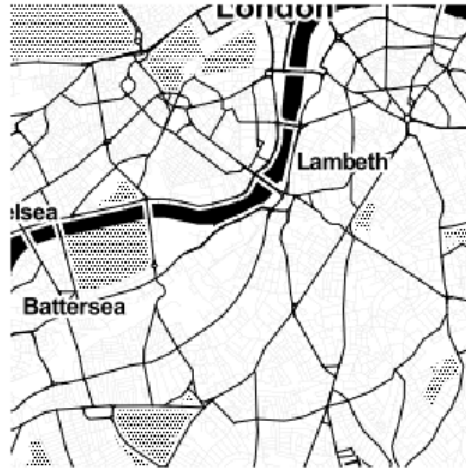
16 `plot(openmap(x,path="historical"))`

©OpenStreetMap contributors. Data by OpenStreetMap available under the Open Database License, cartography is licensed as CC BY-SA.




```
17 plotRGB(openmap(x,path="stamen-toner"))
```

Map tiles by Stamen Design under CC BY 3.0. Data by OpenStreetMap available under the Open Database License



```
18 plotRGB(openmap(x,path="stamen-watercolor"))
```

Map tiles by Stamen Design under CC BY 3.0. Data by OpenStreetMap available under the CC BY-SA

