

Map tiles

Patrick Brown

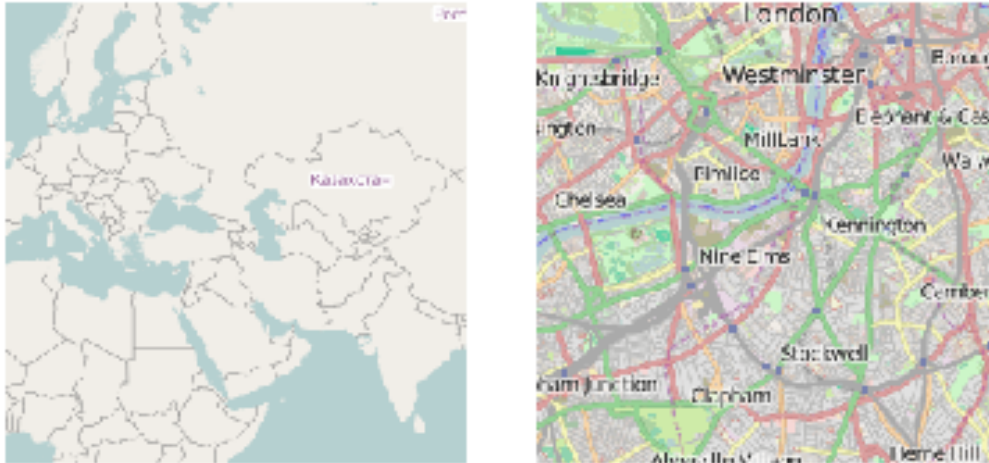
July 7, 2015

1	osm	2
2	osm-no-labels	2
3	osm-de	3
4	osm-transport	3
5	bw-mapnik	4
6	mapquest	4
7	mapquest-sat	5
8	mapquest-labels	5
9	osm-cyclemap	6
10	osm-seamap	6
11	osm-fr	7
12	landscape	7
13	opentopomap	8
14	maptoolkit	8
15	waze	8
16	waze-us	9
17	humanitarian	9
18	cartodb	9
19	cartodb-dark	10
20	historical	10
21	stamen-toner	11
22	stamen-watercolor	11

The following are some examples of maps produced with
`mymap=openmap(x, path="something")`

1 `plot(openmap(x,path="osm"))`

©OpenStreetMap contributors. Data by OpenStreetMap available under the Open Database License, cartography is licensed as CC BY-SA.

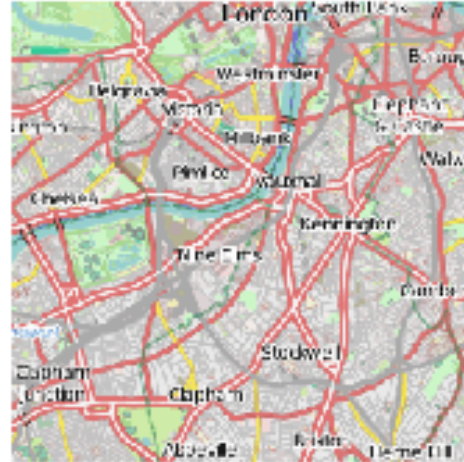


2 `plot(openmap(x,path="osm-no-labels"))`

©OpenStreetMap contributors. Data by OpenStreetMap available under the Open Database License, cartography is licensed as CC BY-SA.

3 `plot(openmap(x,path="osm-de"))`

©OpenStreetMap contributors. Data by OpenStreetMap available under the Open Database License, cartography is licensed as CC BY-SA.



4 `plot(openmap(x,path="osm-transport"))`

©OpenStreetMap contributors. Data by OpenStreetMap available under the Open Database License, cartography is licensed as CC BY-SA.



5 `plot(openmap(x,path="bw-mapnik"))`

©OpenStreetMap contributors. Data by OpenStreetMap available under the Open Database License, cartography is licensed as CC BY-SA.

6 `plotRGB(openmap(x,path="mapquest"))`

Tiles courtesy of MapQuest. Data by OpenStreetMap available under the Open Database License



7 `plotRGB(openmap(x,path="mapquest-sat"))`

Tiles courtesy of MapQuest, portions courtesy NASA/JPL-Caltech and U.S. Depart. of Agriculture, Farm Service Agency.



8 `plotRGB(openmap(x,path="mapquest-labels"))`

Tiles courtesy of MapQuest. Data by OpenStreetMap available under the Open Database License



9 `plot(openmap(x,path="osm-cyclemap"))`

©OpenStreetMap contributors. Data by OpenStreetMap available under the Open Database License, cartography is licensed as CC BY-SA.

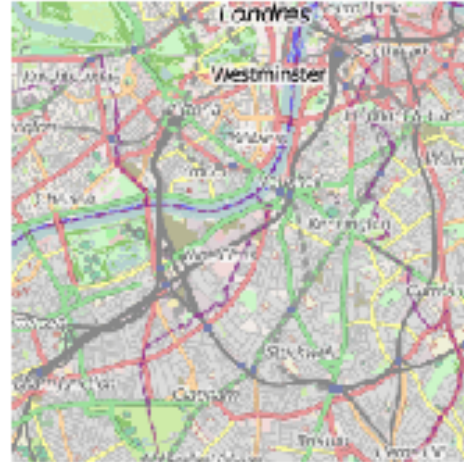


10 `plot(openmap(x,path="osm-seamap"))`

©OpenStreetMap contributors. Data by OpenStreetMap available under the Open Database License, cartography is licensed as CC BY-SA.

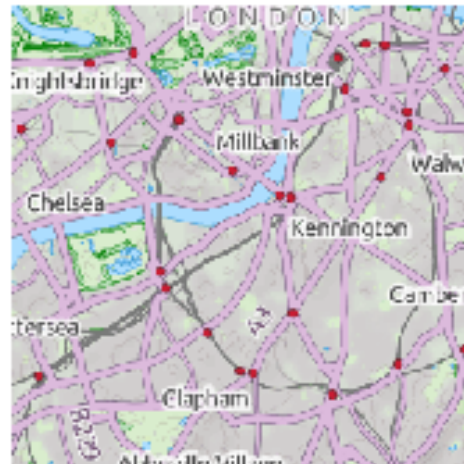
11 `plot(openmap(x,path="osm-fr"))`

©OpenStreetMap contributors. Data by OpenStreetMap available under the Open Database License, cartography is licensed as CC BY-SA.



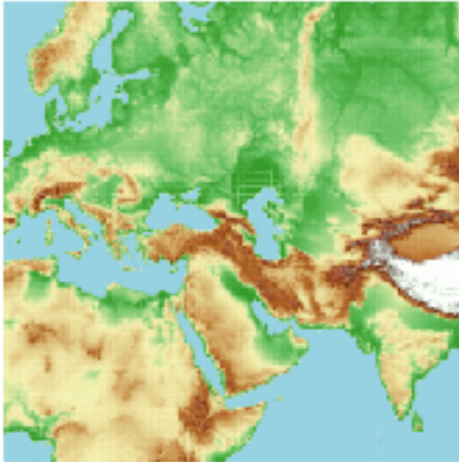
12 `plot(openmap(x,path="landscape"))`

©OpenStreetMap contributors. Data by OpenStreetMap available under the Open Database License, cartography by Thunderforest



13 `plot(openmap(x,path="opentopomap"))`

©OpenStreetMap contributors. Data by OpenStreetMap available under the Open Database License, cartography is licensed as CC BY-SA.



14 `plot(openmap(x,path="maptoolkit"))`

©Toursprung GmbH Data by OpenStreetMap available under the Open Database License



15 `plotRGB(openmap(x,path="waze"))`

©Waze mobile



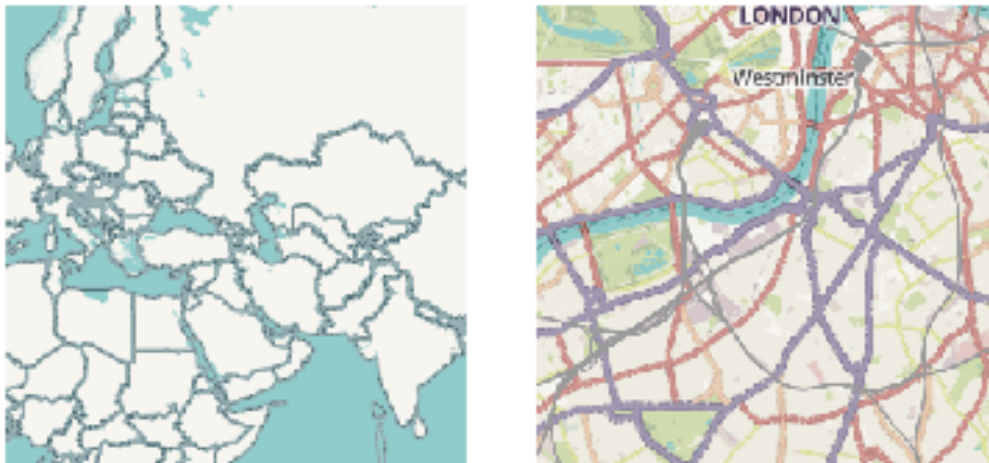

```
16 plotRGB(openmap(x,path="waze-us"))
```

©Waze mobile



```
17 plot(openmap(x,path="humanitarian"))
```

©OpenStreetMap contributors. Data by OpenStreetMap available under the Open Database License, cartography by Humanitarian OSM team is licensed as CC BY-SA.



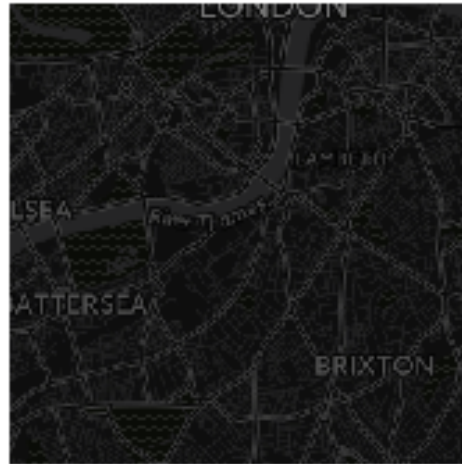
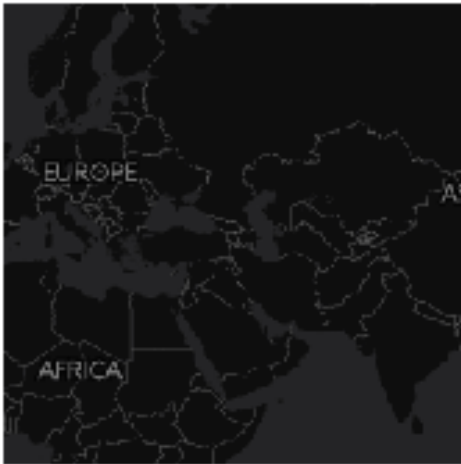
```
18 plot(openmap(x,path="cartodb"))
```

Map tiles by CartoDB under CC BY 3.0. Data by OpenStreetMap available under the Open Database License



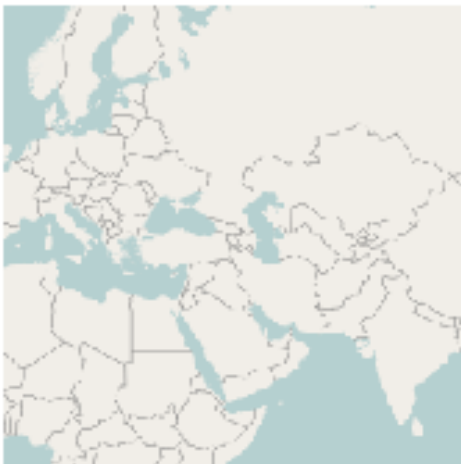
19 `plot(openmap(x,path="cartodb-dark"))`

Map tiles by CartoDB under CC BY 3.0. Data by OpenStreetMap available under the Open Database License



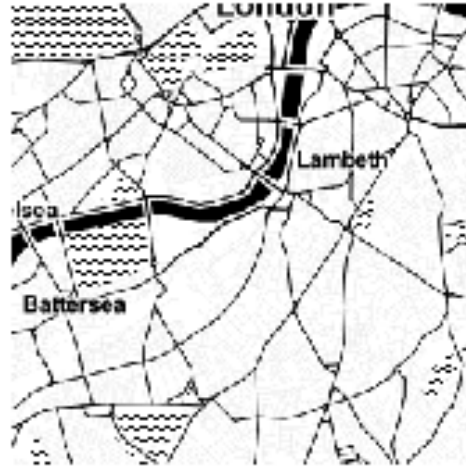
20 `plot(openmap(x,path="historical"))`

©OpenStreetMap contributors. Data by OpenStreetMap available under the Open Database License, cartography is licensed as CC BY-SA.



```
21  plotRGB(openmap(x,path="stamen-toner"))
```

Map tiles by Stamen Design under CC BY 3.0. Data by OpenStreetMap available under the Open Database License



```
22  plotRGB(openmap(x,path="stamen-watercolor"))
```

Map tiles by Stamen Design under CC BY 3.0. Data by OpenStreetMap available under the CC BY-SA

